

Electronic Digital Governor

EDG6000

GAC's EDG6000 digital governor is designed to regulate engine speed on diesel and gasoline reciprocating engines. When paired with a GAC actuator, the EDG system is a suitable replacement for any mechanical governor system that needs flexibility, precision, or accurate control of governed speed. The EDG is designed for industrial engine applications from generator sets, and mechanical drives, to pumps or compressors.



FEATURES

- 4 Selectable Speeds: 3 Fixed Speeds with idle; 1 Variable Speed
- Includes Standard GAC AUX Input for Synchronizing and Load Sharing
- User Tamper Resistant - no External Adjustable Pots or Switches
- Immune to Analog Drift
- IP67 Sealed Case and Connector
- Wide Operating Temperature Range
- RS232 and CAN SAE J1939 Communications
- Multiple PID Control for Full Tuning of Operation Range

ACCESSORIES



CH1520

CH1520

EDG 8' Cable Harness with Mating Connector



TSE050

EC1502

Mating Connector Kit - Without Termination

TSE050

Magnetic Speed Pickup Simulator / Frequency Generator - 750 Hz to 10 KHz

TSE307

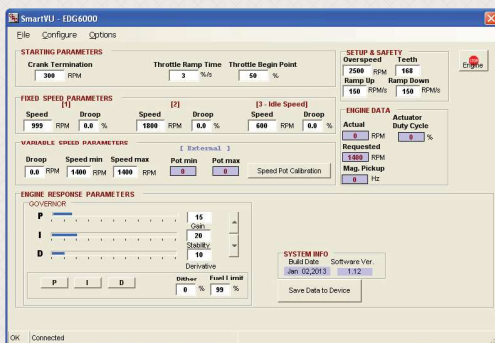
Serial Interface Adapter (RS232 Only)



EC1502



TSE307



SmartVU™

Programmed using GAC's SmartVU Software, the EDG incorporates a simple user interface for initial configuration as well as added functionality for diagnostic and troubleshooting purposes. SmartVU can be downloaded from GAC's Website.



SPECIFICATIONS

Performance

Isochronous Operation	± 0.25%
Speed Range / Governor	400 - 10 KHz (Mag Pickup)
Idle Adjust	Full Range
Speed Trim	Programmable 0 - 100%, (default = 5%)

Compliance / Standards

Agency	CE and RoHS Requirements
Communications	RS-232-C, IEEE J1939

Environmental

Ambient Temperature	-40° to 85°C (-40° to +180°F)
Relative Humidity	up to 100%
All Surface Finishes	Fungus Proof and Corrosion Resistant

Physical

Dimension	2.98in x 4.6in x 41.0in (76mm x 117mm x 41mm)
Weight	6.0 oz (0.17 kg)

Input / Output

Supply	12 - 24 VDC Battery Systems (6.5 to 33 VDC)
Polarity	Negative Ground (Case Isolated)
Power Consumption	70mA max. continuous plus actuator current
Speed Sensor Signal	0.5 - 120 VRMS
Actuator Current (MAX)	6 Amps Continuous
Load Share / Synchronizer Input	0 - 10 VDC (5V nominal, reversed, 100Hz/V)
Reverse Power Protection	Yes
Transient Voltage Protection	60V
Overspeed Output	2A DC
Variable Speed / Trim Input	5K Ω Potentiometer / 0-5 VDC

Reliability

Vibration	10G, 20 - 100 Hz
Shock	20 G
Testing	100% Functional Testing

OPTIONS

Load Sharing Modules



LSM100 Series



LSM200 Series



LSM672

The LSM series of Load Sharing Modules are intended to be paired with GAC's speed control units. All models are built for generator set applications requiring isochronous paralleling, load sharing, and mains power control. GAC's LSM's offer precise functionality with a choice of different features and at a high quality. To figure out which LSM model is right for you, contact Governor's America Corp. or visit the website.

- Power Ramping
- Load Anticipation
- Adjustable Delay
- Power Monitors with LED Bar Graphs
- Forward-Reverse Power Monitors
- Isochronous Load Sharing

Governors America Corp.
720 Silver Street Agawam, MA 01001
Phone: 413.233.1888 Fax: 413.789.7736
www.governors-america.com
info@governors-america.com



8.16 PTI4146 C
© 2013 Governors America Corp. All rights reserved.